

360° Inline Surface Inspection with VS-580



The inline system inspects continuous products such as cables, pipes, bright steel, etc., for anomalies such as scratches, cavities, holes, discolorations, bubbles, inclusions and other irregularities.

When a defect is detected:

- a photo of the defect area (360°) is displayed and, upon request, saved
- a signal (DIO, Profinet, or Profibus) is given out and
- the position of the detected defects on the test object is shown in a defect map.

The vision system is available with a motorized, height-adjustable stand, so that the test objects pass centrally through the aperture.

Variants for different diameter ranges are available.

Features



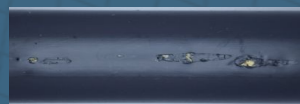
- Adjustable detection sensitivity
- Error images are visualized and can be saved with time stamp and product code
- For transport speeds up to 500m/min
- For diameters from approx. 1mm to 110mm and larger

Customer benefits

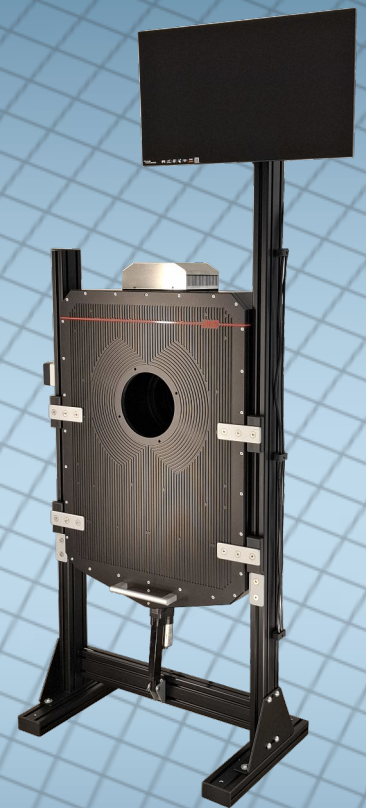
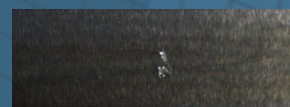
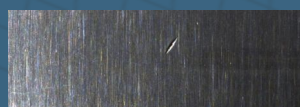
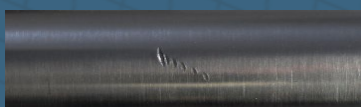


- Continuous logging of product quality
- Complete 360° inspection
- Employee-independent, objective and reproducible inspection results
- Images of each error for process optimization
- Contactless, optical inspection method

Tubes/Pipes



Round steel



VS-580 mit SFV-VS-580

Cables

